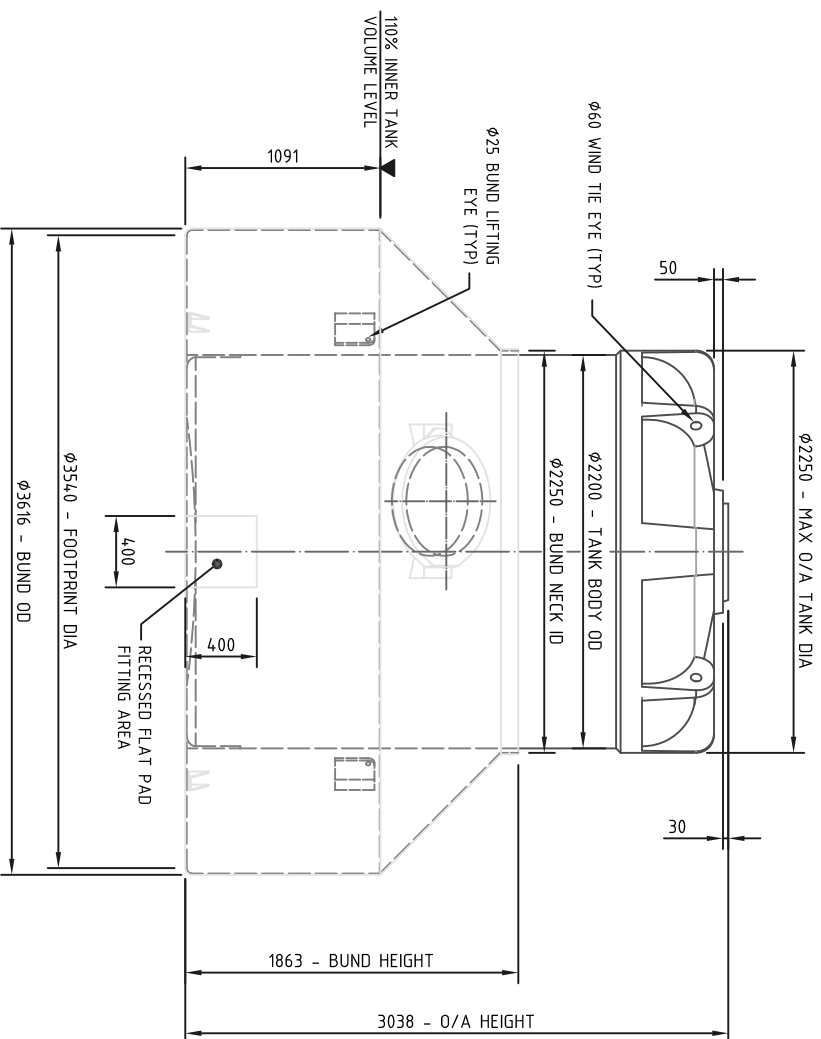


PLAN VIEW



FRONT ELEVATION

GENERAL NOTES:

1. INSTALLATION INSTRUCTIONS ARE PROVIDED WITH EACH TANK.
2. ALL DIMENSIONS ARE APPROXIMATE AND FOR INFORMATION ONLY.
3. ALLOW FOR EXPANSION WHEN TANK IS FULL.
4. SITE FOUNDATIONS TO ACCOMMODATE WEIGHT OF TANK/BUND AND CONTENTS.

ISSUE	MODIFICATION	BY	CHK	APV	DATE
01	FIRST ISSUE	CH	KG	KS	31.01.05

BALMORAL GROUP LTD

Balmoral Park, Loinston, Aberdeen AB12 3XV Scotland
 Telephone +44 (0)1224 859000 Fax +44 (0)1224 859059
 E-mail group@balmoral.co.uk



THIS DRAWING IS COPYRIGHT AND IS ISSUED ON CONDITION THAT IT IS NOT COPIED, REPRODUCED OR DISCLOSED TO A THIRD PARTY WITHOUT CONSENT IN WRITING OF BALMORAL GROUP LTD., ABERDEEN

FIRST ANGLE PROJECTION

THIRD ANGLE PROJECTION

ALL DIMENSIONS IN MILLIMETRES UNLESS STATED OTHERWISE - DO NOT SCALE IF IN DOUBT - ASK

CLIENT	BALMORAL CHEMICAL TANKS			PROJECT No.	0064
DRAWING TITLE	CG10000 - GENERAL ARRANGEMENT			DRAWING No.	0064-0052
DRAWN BY	Clark Hayward	CHECKED BY	Ken Gibson	APPROVED BY	Kevan Stokes
SCALE	1:30	DATE	31 Jan 05	SHEET SIZE	A3
				JOB No.	STD DRG