

BALMORAL TANKS

BALMORAL SAMPLING CHAMBER INSTALLATION INSTRUCTIONS

Handling

The sampling chambers can be easily unloaded and installed without special lifting or mechanical handling equipment.

Avoid any impact on sharp objects.

Specification

The correct specification to suit site requirements should be given at time of order and the unit should be finally checked for specification onsite before installation.

It should be noted that the standard unit meets the following dimensions: (see Figure 2)

- Depth from ground level to drain invert at inlet : 1050mm
- Depth from ground level to drain invert at outlet : 1215mm
- Head drop between inlet and outlet : 165mm
- Inlet and outlets are fitted with grommets to suit pipe diameter : OD 110mm uPVC

NB. Special units can be supplied to order with the following options:

- heavy duty to suit deeper invert depth (max 1.5m) with addition of extension pieces (supplied at a 600mm standard length and cut to suit the invert depth)
- For multiple inlet options (see Fig 1) the unit can be supplied without drilled holes. A 121mm diameter hole cutter should be used at the moulded drill start locations (1-5). Remove all burrs around drilled holes before fitting sealing grommets
- For reduced invert depth, the unit can be easily cut down in height using the moulded-in cutting guides for reference

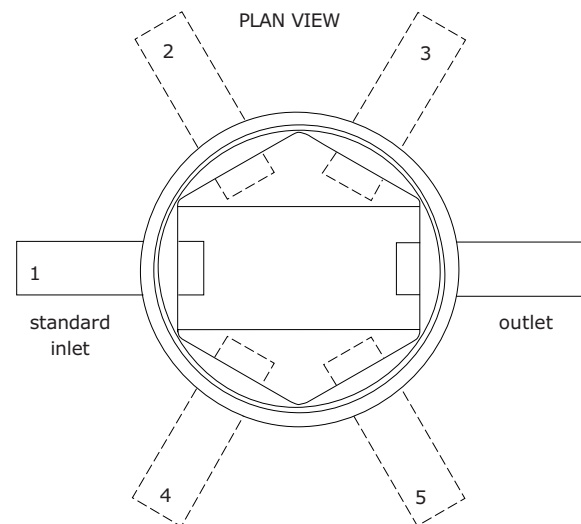
Contact the Balmoral Tanks sales office for more information.

Siting

The position of the sampling chamber should always be agreed prior to installation with the Building Control Dept, and the National River Authority, River Purification Board, or the appropriate controlling authority. The sampling chamber should normally be situated

approximately 2-3 metres downstream from the tank or treatment plant with the inlet pipe being solid (non-perforated), OD 110mm uPVC, laid to a fall of 1 in 40, and the perforated soakaway system at the outlet side laid to a maximum fall of 1 in 200. The sampling chamber can be used by more than one septic tank.

Figure 1
Inlet options



Installation

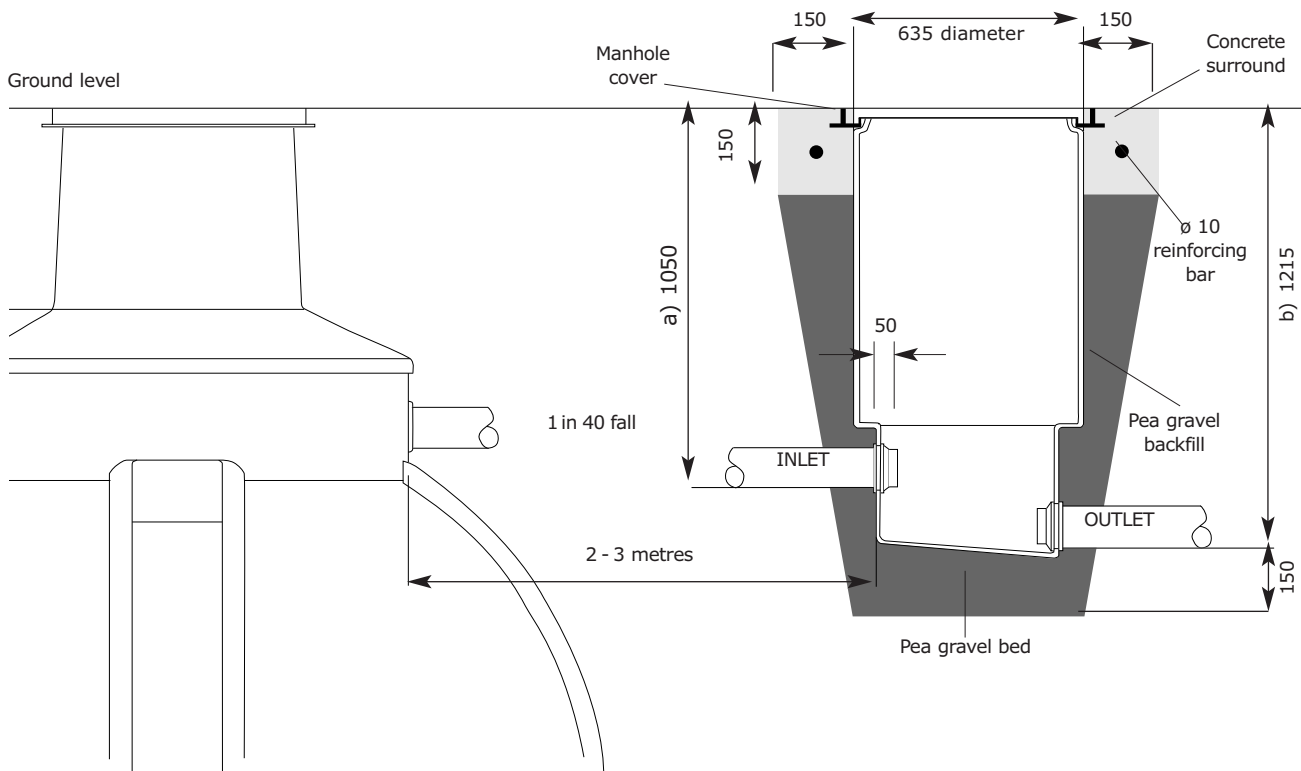
- The trench should be excavated along the proposed route of the drain and then enlarged at the position of the sampling chamber to allow an additional 150mm all round (ie total 900mm dia) and an additional 150mm underneath the sampling chamber
- Set the sampling chamber on a 150mm thick layer of pea gravel (12 to 15mm dia) and fit the inlet and outlet pipework into the neoprene grommets provided, so that they project 50mm into the chamber
- Check that the sampling chamber is true and level then continue to backfill carefully up around the sampling chamber with pea gravel in 150mm deep layers at the same time as the drain trench is being backfilled

Figure 2

Balmoral sampling chamber

NB. Inlet/outlet depths based on use with manhole cover of height 50mm

Not to scale



- Terminate the gravel backfill 150mm below ground level and set temporary form work to support concrete haunching around the manhole cover (minimum 150mm wide by 150mm deep). It is also recommended that a minimum of one 10mm dia steel reinforcing bar is installed within the concrete to provide additional strength (See Figure 2).

NB. In high water or wet ground conditions it may be necessary to install with a concrete bed and backfill to prevent flotation. If in doubt consult a qualified civil or structural engineer for preferred backfill instructions.

General

Please ensure that the lockable manhole cover is in position at all times to avoid accidental injury. Manhole to be sited only in areas subjected to pedestrian traffic.

Balmoral Site Services

For technical advice, or if you require a visit by one of Balmoral's Technical Representatives for on site information, please contact Balmoral Site Services. For further information on Annual Maintenance Contracts either with Balmoral Tanks or through your nearest Authorised Installer please contact Balmoral Tanks.

Authorised distributor

BALMORAL TANKS

Head Office & Factories
 Balmoral Park, Loirston, Aberdeen
 AB12 3GY, Scotland
 Telephone +44 (0)1224 859100
 Fax +44 (0)1224 859123
 E-mail tanks@balmoral.co.uk



Balmoral Tanks believe that the information printed in this leaflet is accurate, and published for information only. No warrants, express or implied, are contained therein, nor does any legal liability attach to Balmoral Tanks for any reason whatsoever. Property rights of the subject belong to Balmoral Tanks, and transfer of these rights is not granted by possession of this document. The company's policy is one of continuous product improvement and we reserve the right to make alterations to our range and specification without prior notice.